




# Electronic Hook Switch for Alcatel-Lucent

Alcatel-Lucent 



**Desk Phone Models**  
 IP Touch 4028, IP Touch 4038, IP Touch 4068, Touch 4029, Touch 4039, My IC 8082


**EHS Cable**




**APA-23\***  
 PN: 38908-11

\* APA-23 replaces APA-20 and APA-22


**Plantronics Audio Solutions**



**Savi 700 Series**  
 Wireless headset system manages PC, mobile and desk phone calls



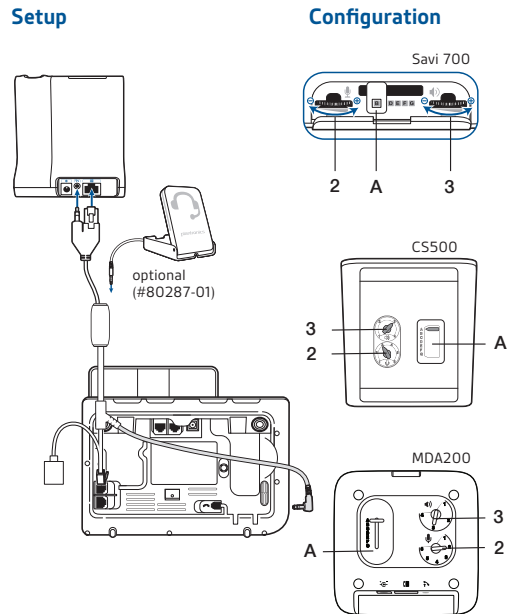
**CS500 Series**  
 Wireless headsets manage desk phone calls



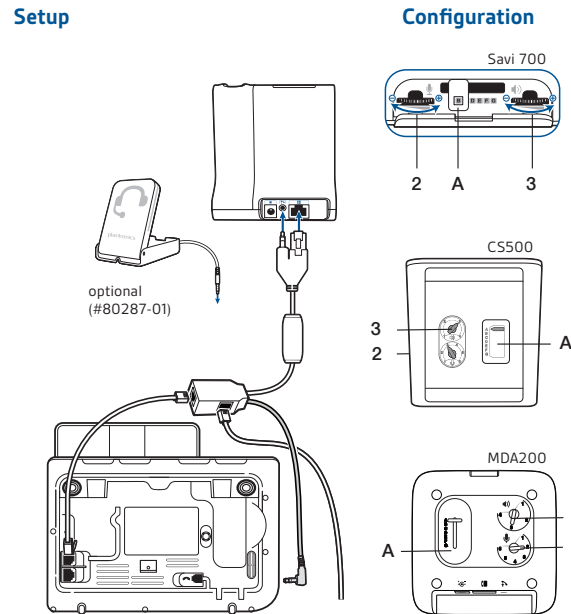
**MDA200**  
 Enables USB connectivity to the desk phone to manage both PC and desk phone calls

## EHS Setup Use the EHS setup below to automatically answer a desk phone call by pressing a button on your Savi 700 Series or CS500 Series headset or MDA200.

### Alcatel-Lucent models: IP Touch 4028, 4038, 4068



### Alcatel-Lucent models: Touch 4029, 4039



### Alcatel-Lucent models: My IC 8082

